

# Home Designs by Bruno

See Me Before You Build

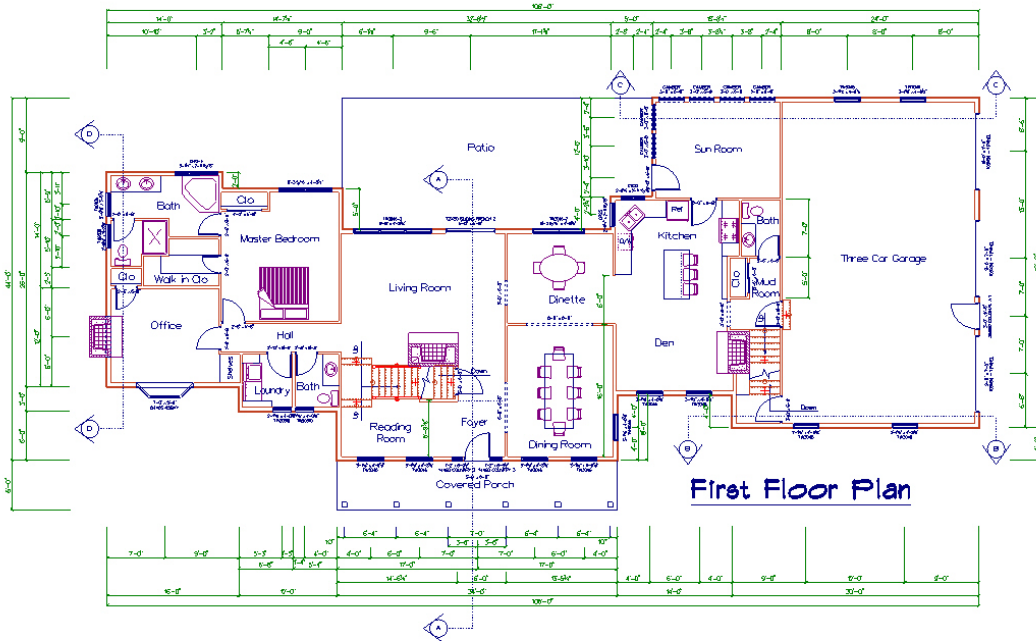
HDBB0411003

## Long Cape

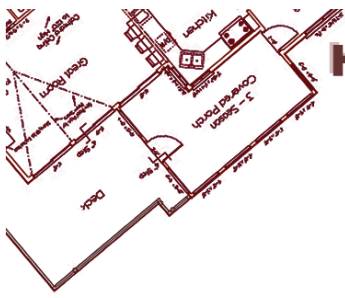
**3,358 SQ Ft**  
**4 Bedrooms**  
**5 1/2 Baths**  
**3 Car Garage**



Front Elevation View



First Floor Plan



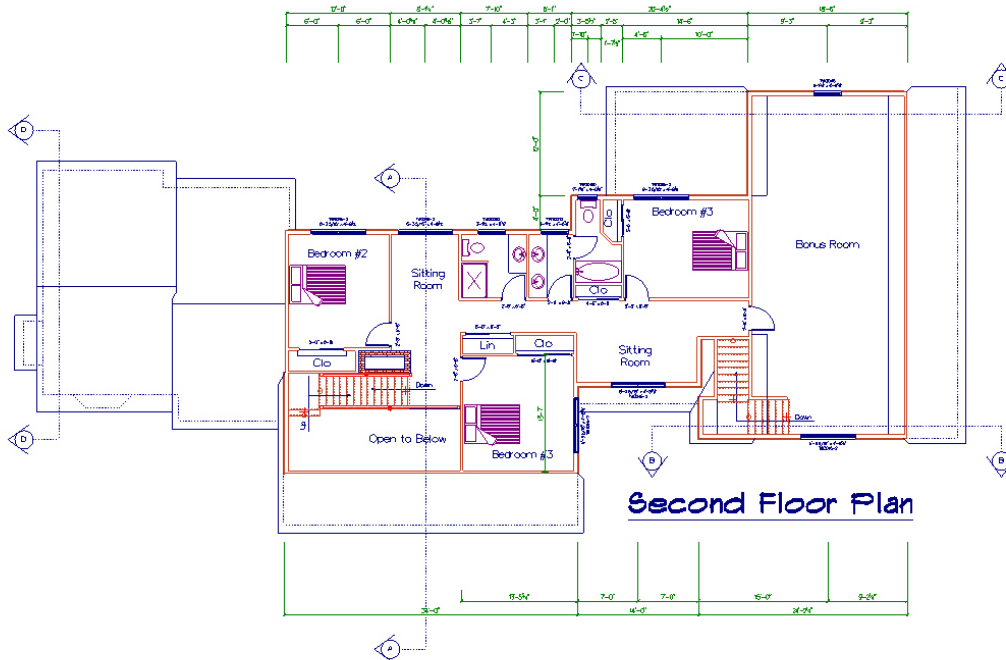
# Home Designs by Bruno

See Me Before You Build

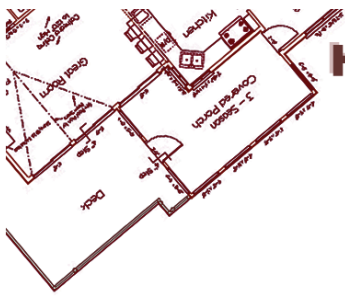
HDBB0411003



Rear Elevation View



Second Floor Plan

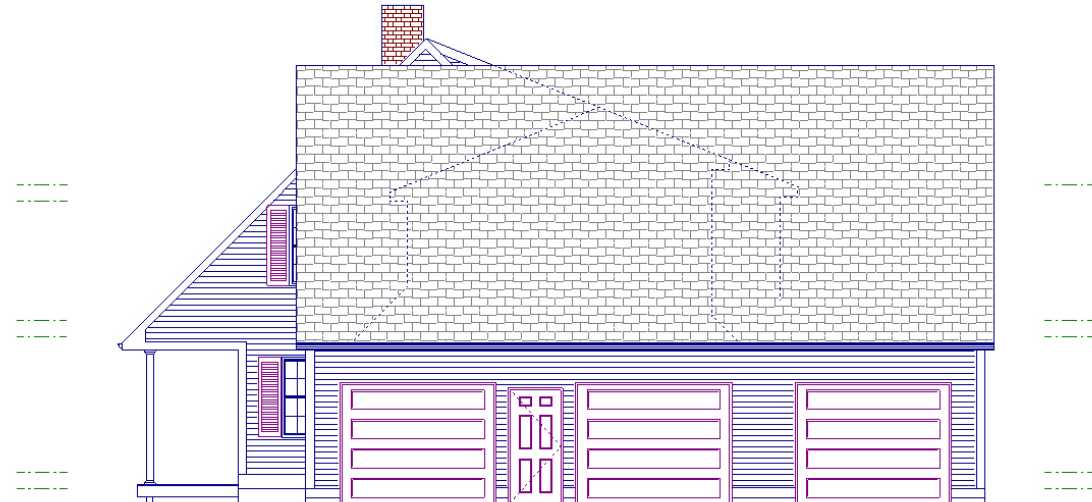


**Home Designs by Bruno**  
See Me Before You Build

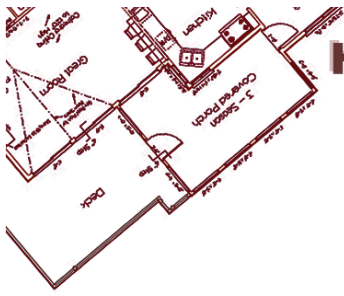
HDBB0411003



Left Side Elevation View



Right Side Elevation View



## Home Designs by Bruno

See Me Before You Build

HDBB0411003

**First Floor:** 2223 sq ft.

**Second Floor:** 1,135 sq ft.

**Bonus:** 400

**Sun Room:** 196

**Total:** 3,358 sq ft

**Bedrooms:** 4

**Bathrooms:** 5 ½

**Garage:** 3 Car

**Width:** 50 ft.

**Length:** 106 ft.

**Scale:** ¼"

**Special Features:**

- Large Covered Front Porch
- 3 Car Garage
- Main Floor Laundry
- Sun Room
- Bonus Room over Garage
- 2 Stairways
- We will modify the interior room sizes for FREE just ask. Also, contact us for your custom design.

**You Receive:**

- Six sets of 36"x24" Prints
- Exterior Elevations
- Floor plans for each Living Level and Garage
- Stair Cross sections, Details & Specifications
- Foundation Plan
- Window Schedule, General Section & Specifications
- Roof Plan
- RESCheck – Energy audit
- Hurricane wind calculation