

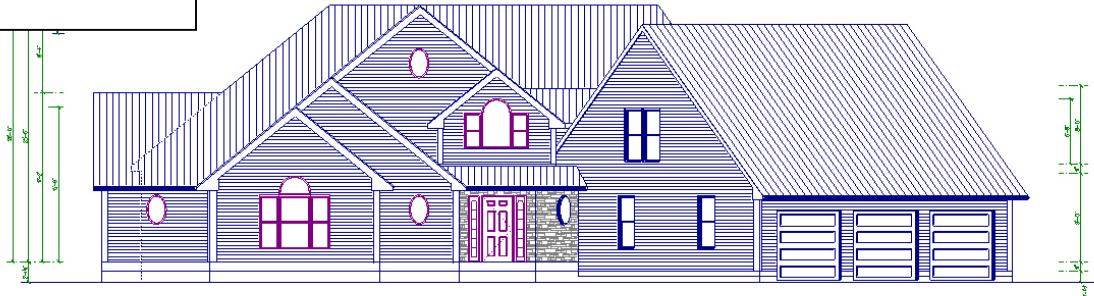
Home Designs by Bruno

See Me Before You Build

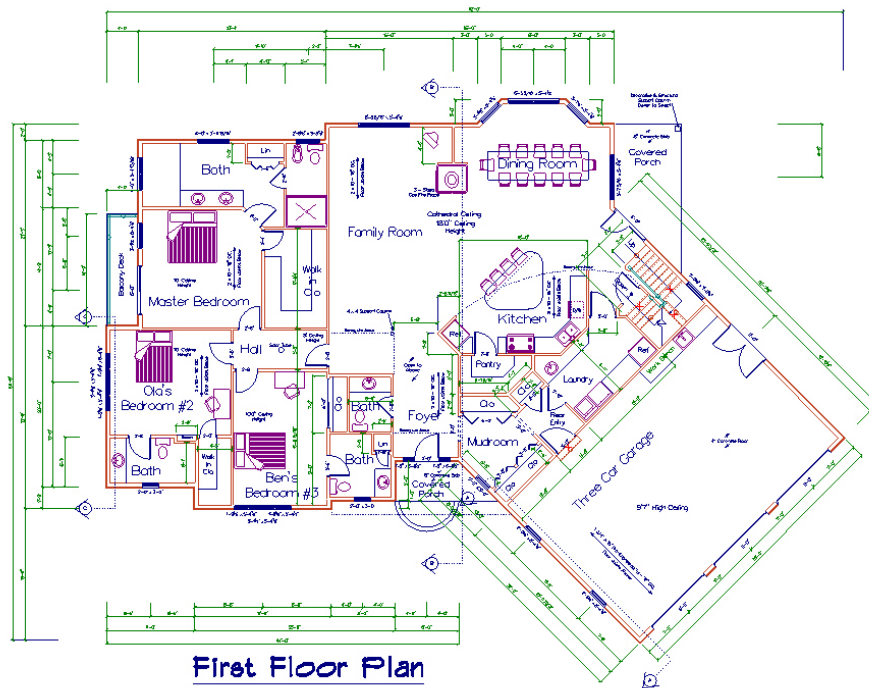
HDBB0411005

Today's Living

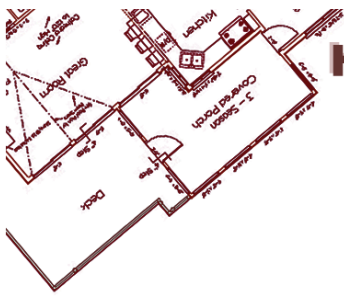
4,241 SQ Ft
4 Bedrooms
5 1/2 Baths
3 Car Garage



Front Elevation View



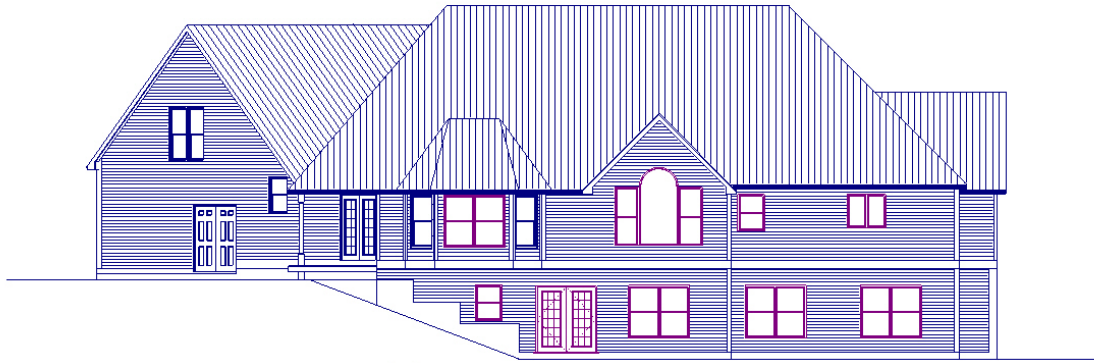
First Floor Plan



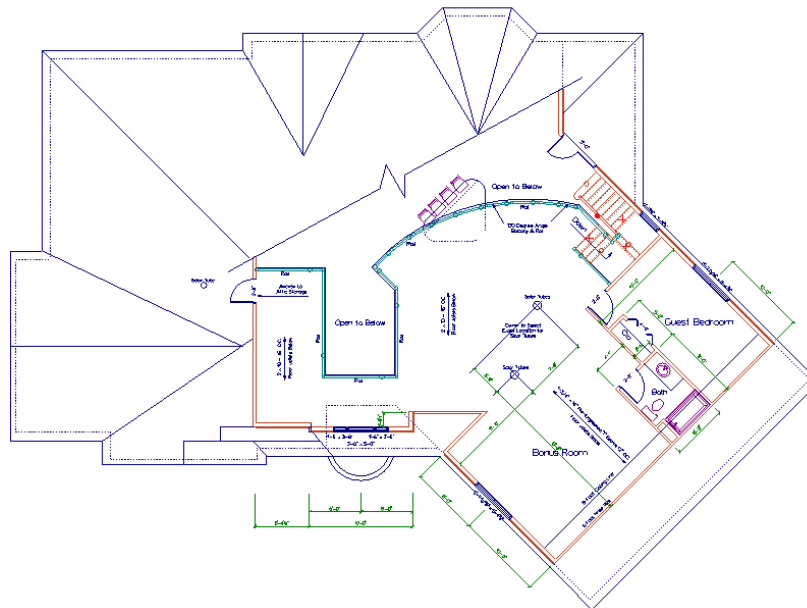
Home Designs by Bruno

See Me Before You Build

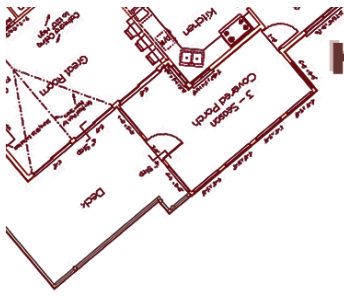
HDBB0411005



Rear Elevation View



Second Floor Plan



Home Designs by Bruno

See Me Before You Build

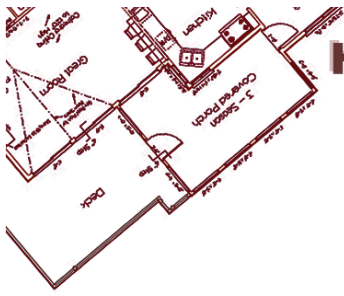
HDBB0411005



Left Side Elevation View



Right Side Elevation View



Home Designs by Bruno

See Me Before You Build

HDBB0411005

First Floor: 2,897 sq ft.

Second Floor: 1,344 sq ft.

Total: 4,241 sq ft

Bedrooms: 5

Bathrooms: 5 ½

Garage: 3 Car

Width: 65 ft.

Length: 92 ft.

Scale: ¼"

Special Features:

- Curved Balcony Overlooking Kitchen, Living and Dining Room
- 3 Car Garage
- Covered Front Porch
- Master Bedroom Exterior Balcony
- All Rooms on Main Floor
- Second Floor all Bonus Area
- We will modify the interior room sizes for FREE just ask. Also, contact us for your custom design.

You Receive:

- Six sets of 36"x24" Prints
- Exterior Elevations
- Floor plans for each Living Level and Garage
- Stair Cross sections, Details & Specifications
- Foundation Plan
- Window Schedule, General Section & Specifications
- Roof Plan
- RESCheck – Energy audit
- Hurricane wind calculation